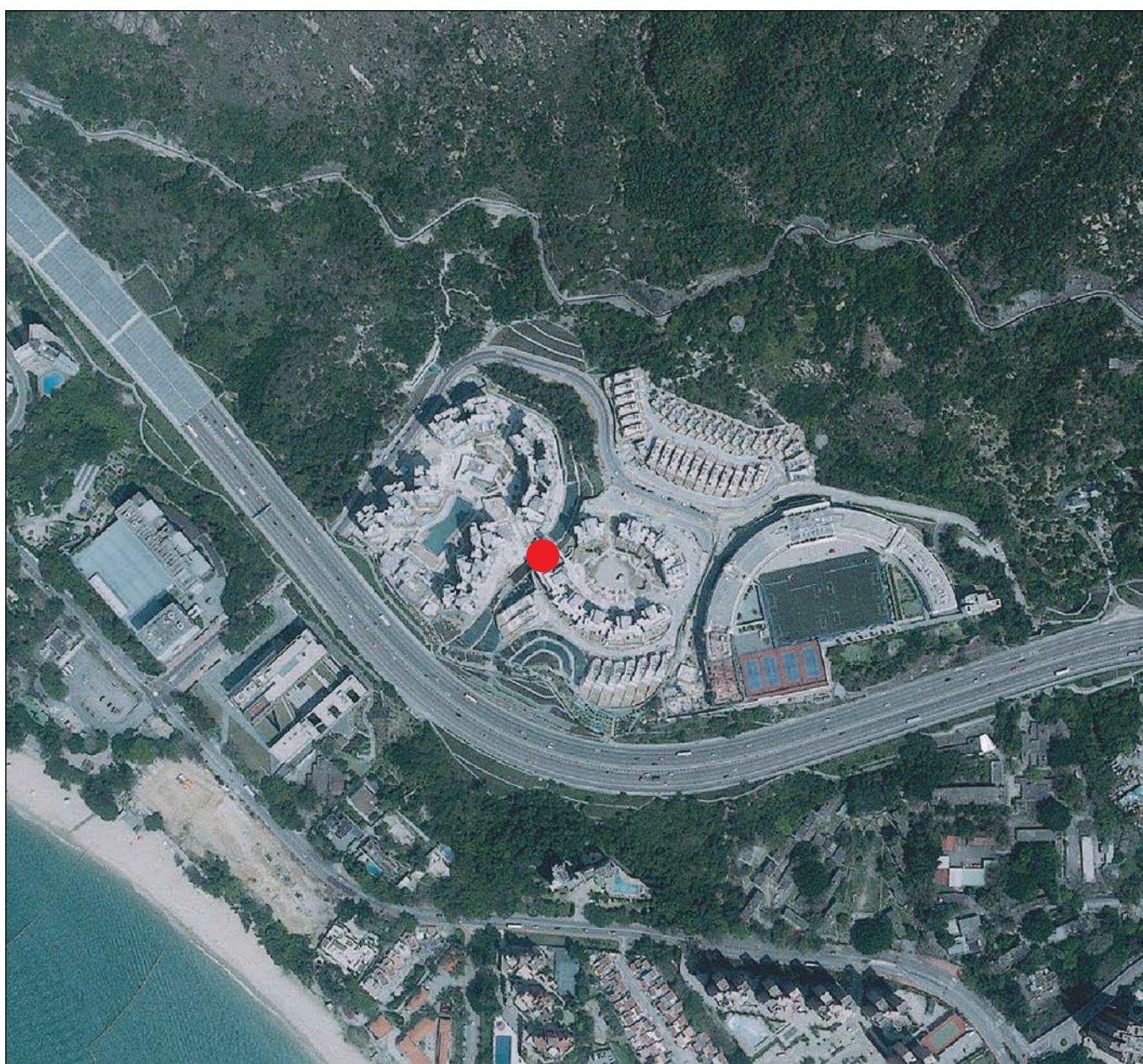


## AERIAL PHOTOGRAPH OF THE DEVELOPMENT 發展項目的鳥瞰照片



E017153C

● Location of the Development  
發展項目的位置

Source of aerial photograph: Survey and Mapping Office of Lands Department, the Government of the Hong Kong Special Administrative Region.  
鳥瞰照片來源：香港特別行政區政府地政總署測繪處

### Notes :

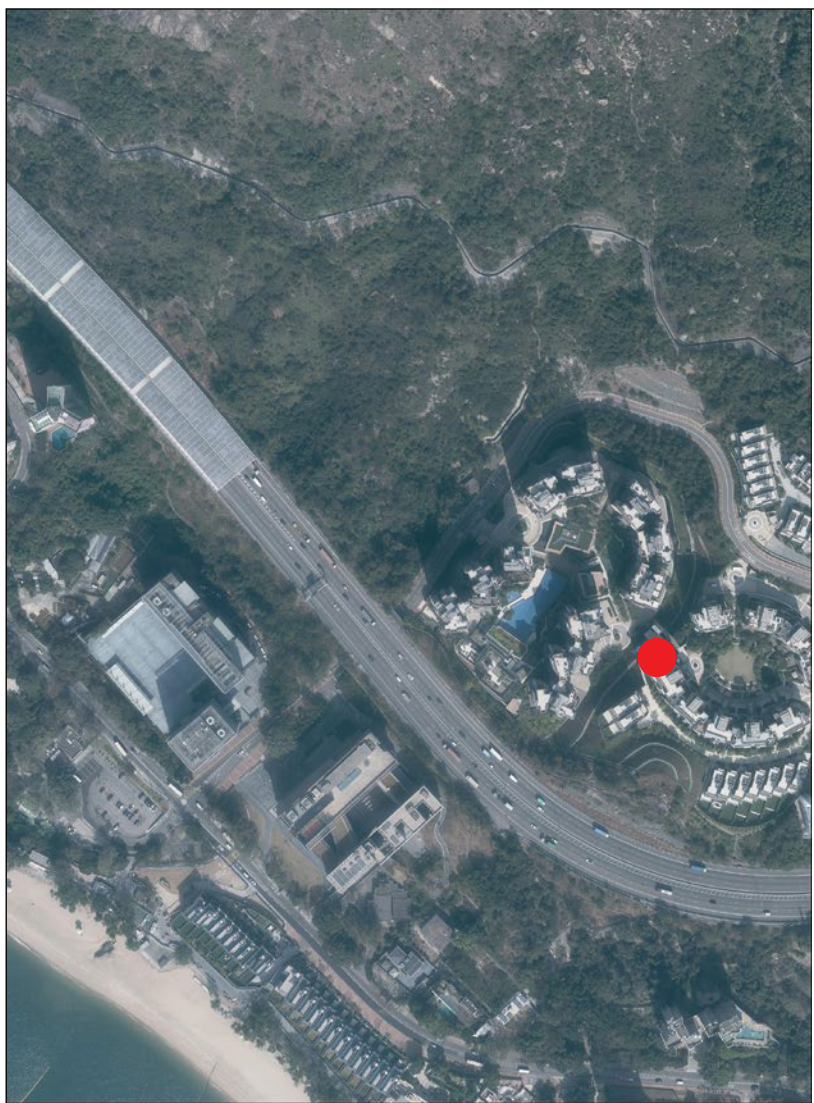
1. The above aerial photograph is taken at a flying height of 6,900 feet on 2 April, 2017 (Photo No. E017153C).
2. Survey and Mapping Office, Lands Department, The Government of HKSAR © Copyright reserved – reproduction by permission only.
3. Due to technical reasons (such as the shape of the Development), the aerial photographs have shown area more than that required under the Residential Properties (First-hand Sales) Ordinance.
4. The Vendor also advises purchasers to conduct on-site visit for a better understanding of the development site, its surrounding environment and the public facilities nearby.

### 附註：

1. 上述鳥瞰照片於2017年4月2日(照片編號：E017153C)6,900呎的飛行高度拍攝。
2. 香港特別行政區政府地政總署測繪處©版權所有，未經許可，不得複製。
3. 因技術原因(例如發展項目之形狀)，鳥瞰照片所顯示之範圍多於《一手住宅物業銷售條例》所要求顯示的範圍。
4. 賣方亦建議買方到該發展地盤作實地考察，以獲取對該發展地盤，以及周邊地區環境及附近的公共設施有較佳的了解。



AERIAL PHOTOGRAPH OF THE DEVELOPMENT  
發展項目的鳥瞰照片



This blank area falls outside the coverage of the aerial photograph  
鳥瞰照片並不覆蓋本空白範圍

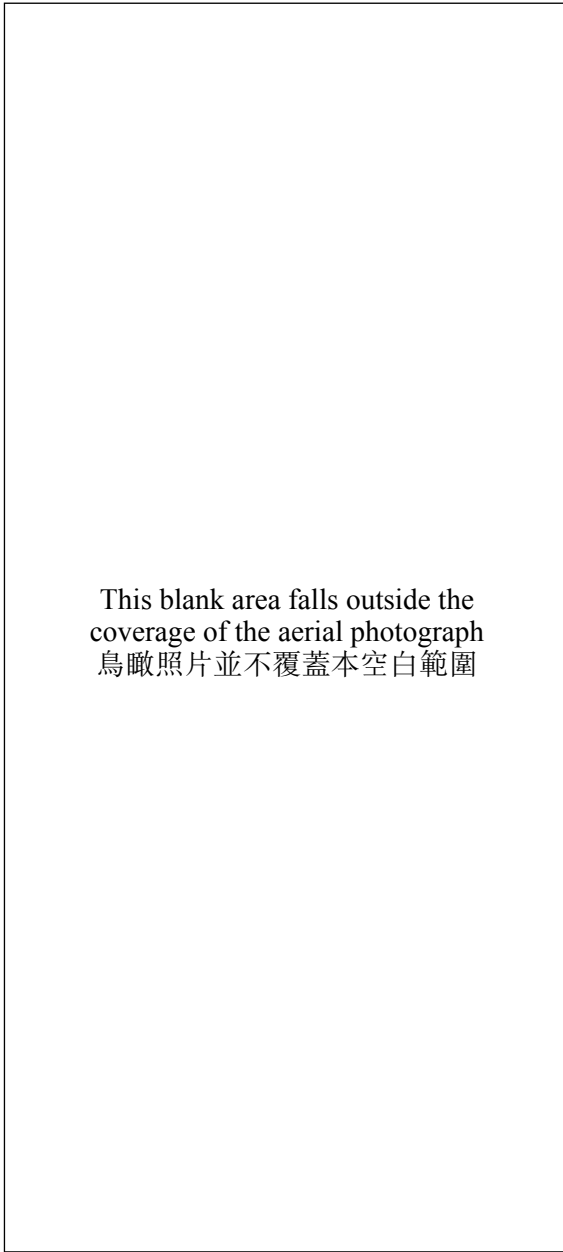


Source of aerial photograph:  
Survey and Mapping Office  
of Lands Department, the  
Government of the Hong Kong  
Special Administrative Region.  
鳥瞰照片來源：香港特別行政區  
政府地政總署測繪處

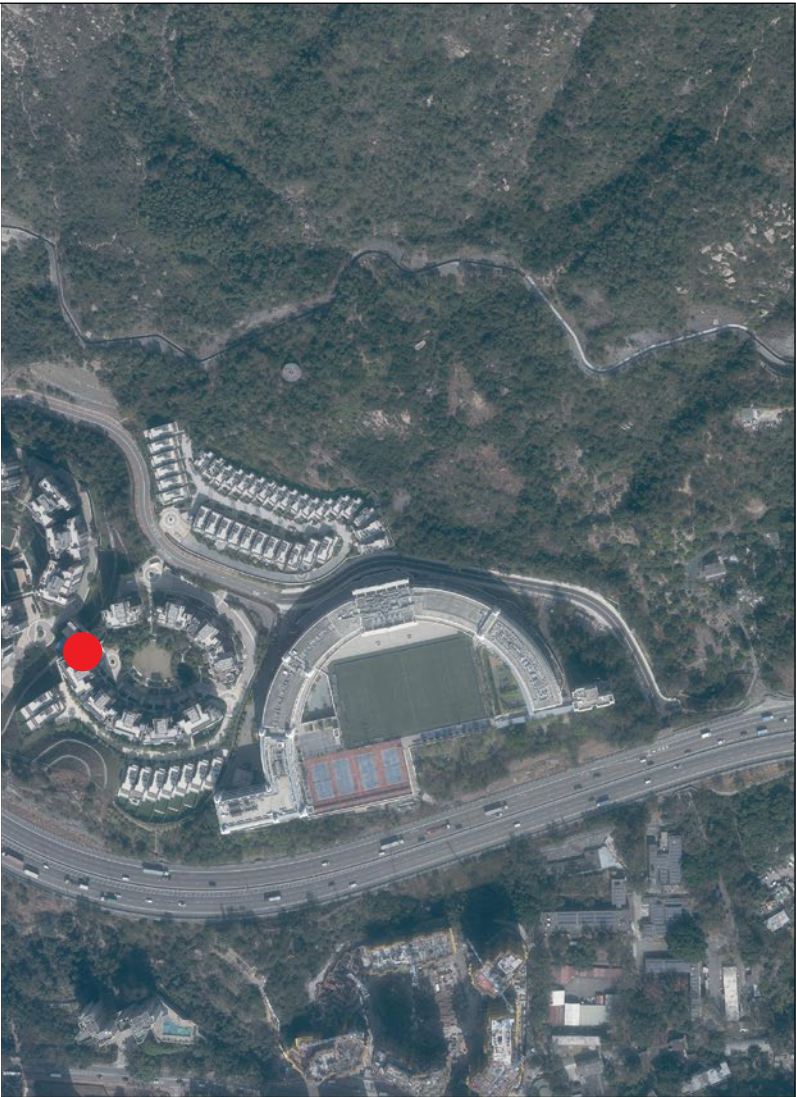
Notes :

1. The above aerial photographs are taken at a flying height of 6,900 feet on 18 January, 2021 (Photo No. E129447C) and on 18 January, 2021 (Photo No. E129450C).
2. Survey and Mapping Office, Lands Department, The Government of HKSAR © Copyright reserved – reproduction by permission only.
3. Due to technical reasons (such as the shape of the Development), the aerial photographs have shown area more than that required under the Residential Properties (First-hand Sales) Ordinance.
4. The Vendor also advises purchasers to conduct on-site visit for a better understanding of the development site, its surrounding environment and the public facilities nearby.

E129450C



This blank area falls outside the coverage of the aerial photograph  
鳥瞰照片並不覆蓋本空白範圍



附註：

1. 上述鳥瞰照片於2021年1月18日(照片編號：E129447C)及2021年1月18日(照片編號：E129450C)6,900呎的飛行高度拍攝。
2. 香港特別行政區政府地政總署測繪處©版權所有，未經許可，不得複製。
3. 因技術原因(例如發展項目之形狀)，鳥瞰照片所顯示之範圍多於《一手住宅物業銷售條例》所要求顯示的範圍。
4. 賣方亦建議買方到該發展地盤作實地考察，以獲取對該發展地盤，以及周邊地區環境及附近的公共設施有較佳的了解。

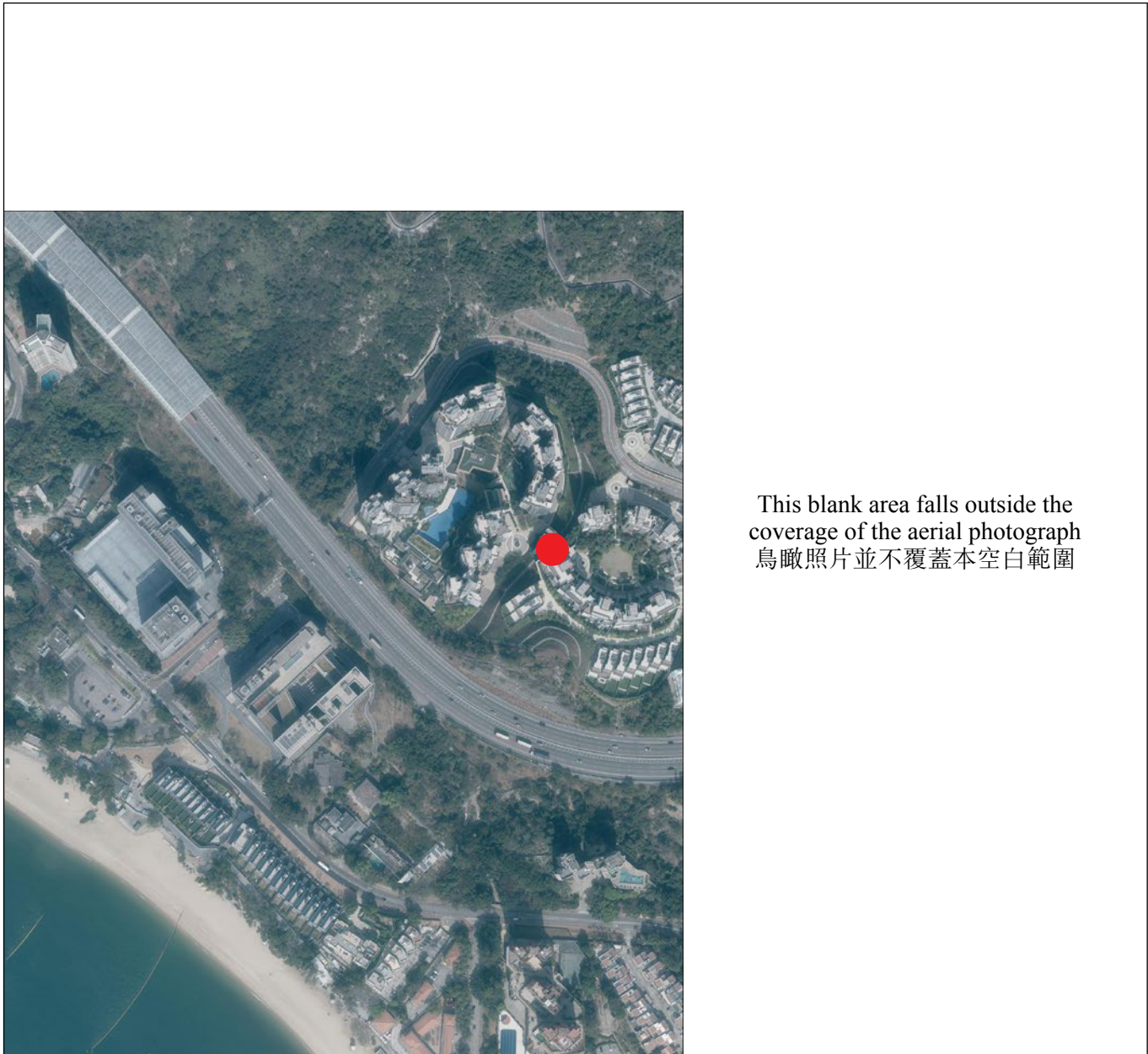
E129447C



Location of the Development  
發展項目的位置



AERIAL PHOTOGRAPH OF THE DEVELOPMENT  
發展項目的鳥瞰照片



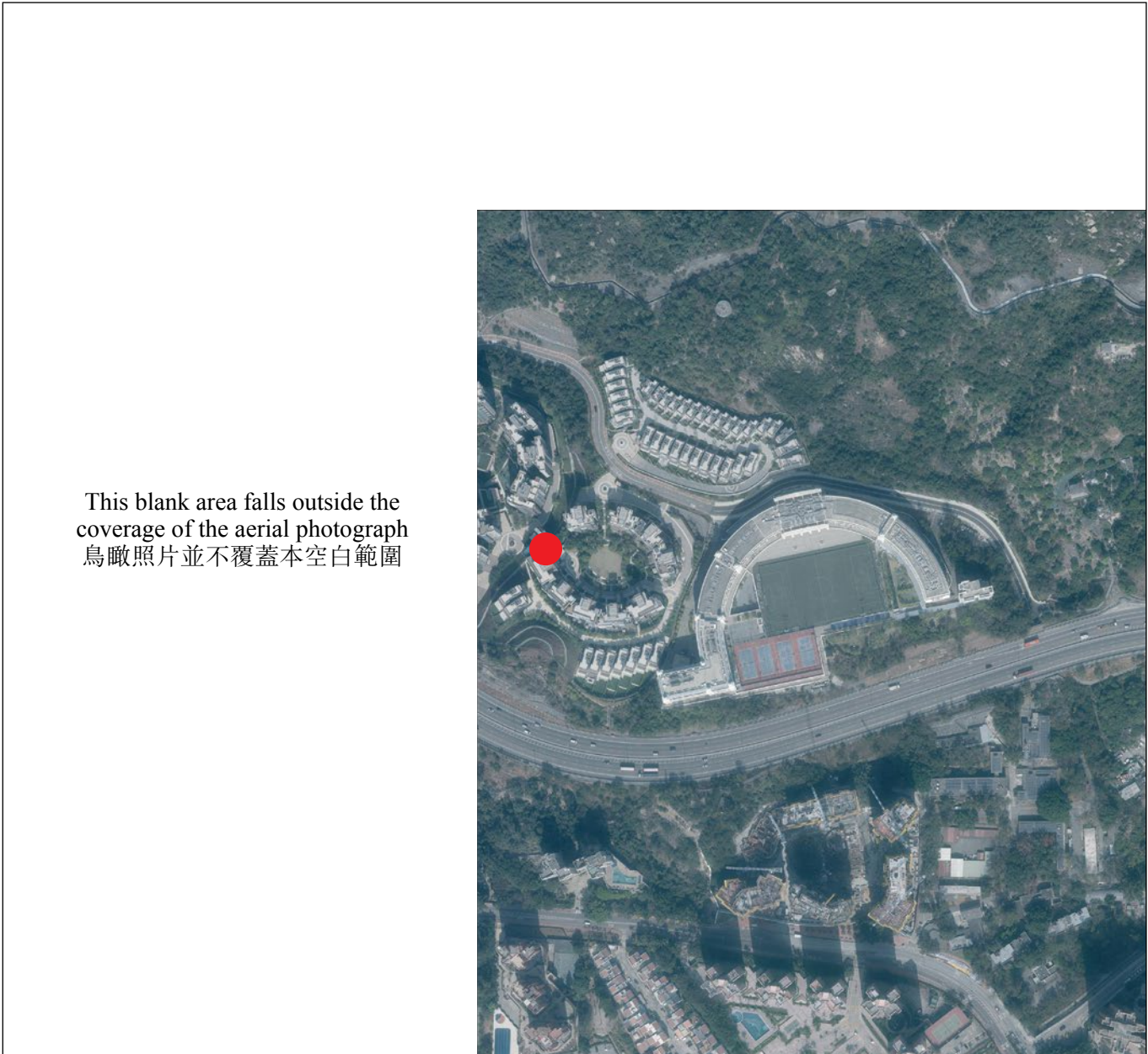
E129984C



Source of aerial photograph:  
Survey and Mapping Office  
of Lands Department, the  
Government of the Hong Kong  
Special Administrative Region.  
鳥瞰照片來源：香港特別行政區  
政府地政總署測繪處

Notes :

1. The above aerial photographs are taken at a flying height of 6,900 feet on 18 January, 2021 (Photo No. E129981C) and on 18 January, 2021 (Photo No. E129984C).
2. Survey and Mapping Office, Lands Department, The Government of HKSAR © Copyright reserved – reproduction by permission only.
3. Due to technical reasons (such as the shape of the Development), the aerial photographs have shown area more than that required under the Residential Properties (First-hand Sales) Ordinance.
4. The Vendor also advises purchasers to conduct on-site visit for a better understanding of the development site, its surrounding environment and the public facilities nearby.



E129981C

● Location of the Development  
發展項目的位置