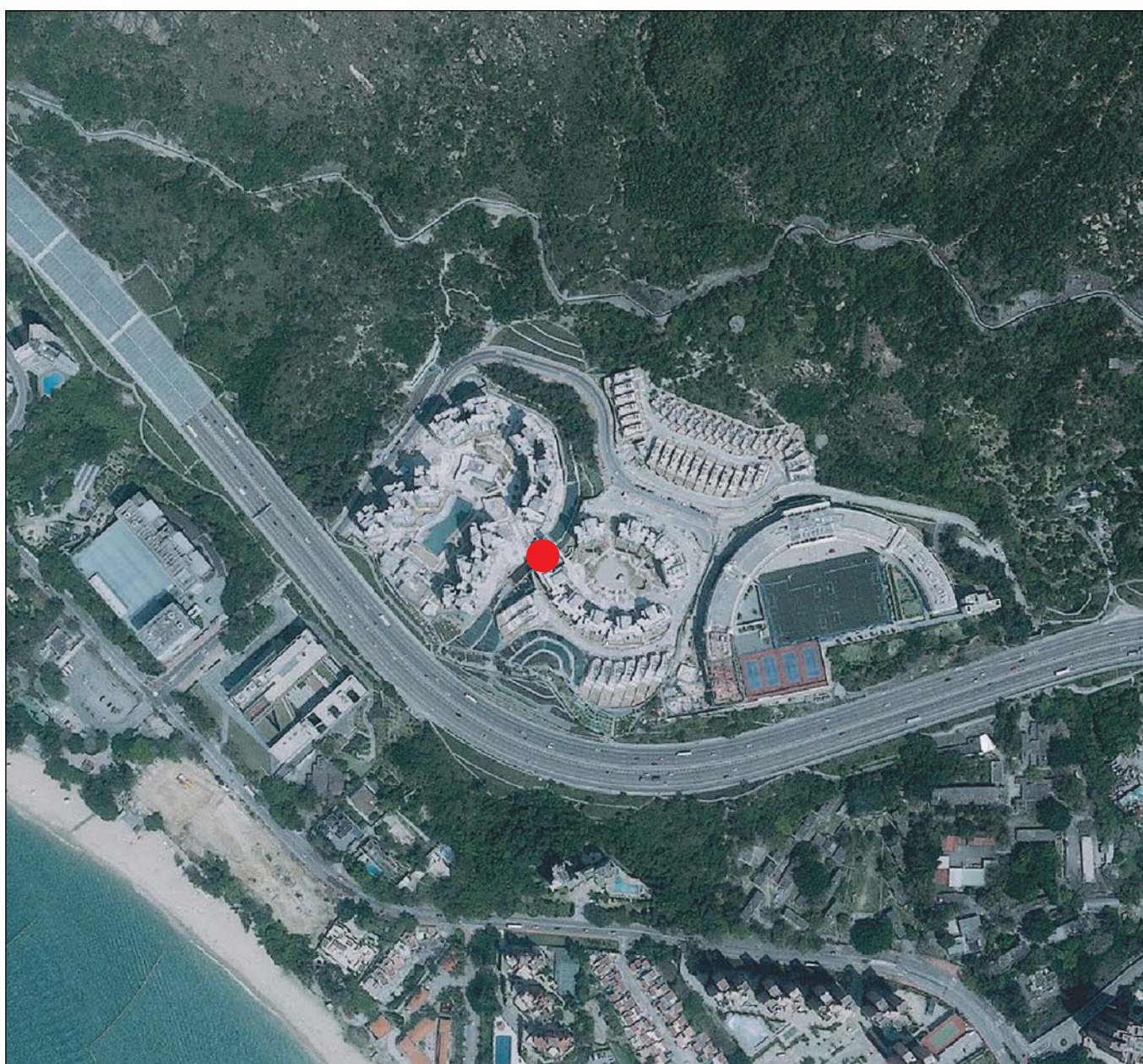


## AERIAL PHOTOGRAPH OF THE DEVELOPMENT 發展項目的鳥瞰照片



● Location of the Development  
發展項目的位置

Source of aerial photograph: Survey and Mapping Office of Lands Department, the Government of the Hong Kong Special Administrative Region.  
鳥瞰照片來源：香港特別行政區政府地政總署測繪處

### Notes :

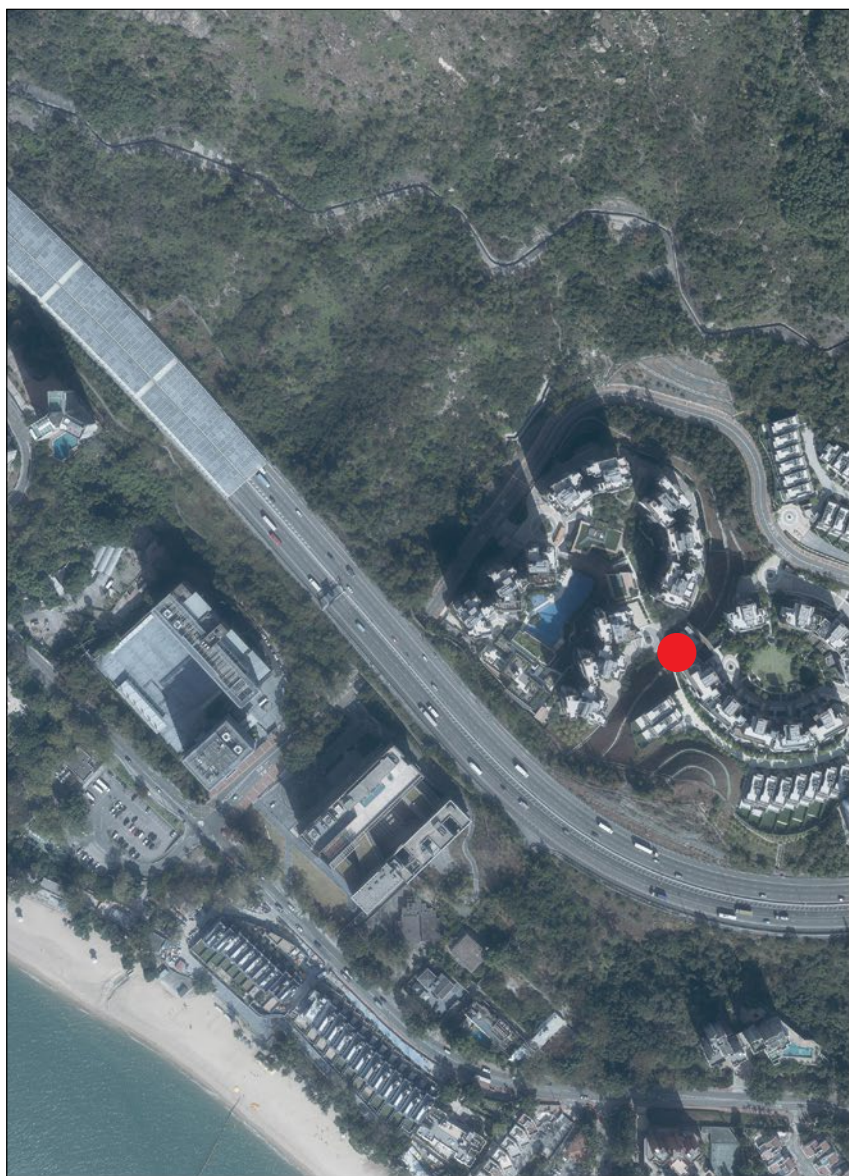
1. The above aerial photograph (Photo No. E017153C) is taken at a flying height of 6,900 feet on 2 April, 2017.
2. Survey and Mapping Office, Lands Department, The Government of HKSAR © Copyright reserved – reproduction by permission only.
3. Due to technical reasons (such as the shape of the Development), the aerial photograph has shown area more than that required under the Residential Properties (First-hand Sales) Ordinance.
4. The Vendor also advises purchasers to conduct on-site visit for a better understanding of the development site, its surrounding environment and the public facilities nearby.

### 附註：

1. 上述鳥瞰照片(照片編號：E017153C)於2017年4月2日6,900呎的飛行高度拍攝。
2. 香港特別行政區政府地政總署測繪處©版權所有，未經許可，不得複製。
3. 因技術原因(例如發展項目之形狀)，鳥瞰照片所顯示之範圍多於《一手住宅物業銷售條例》所要求顯示的範圍。
4. 賣方亦建議買方到該發展地盤作實地考察，以獲取對該發展地盤，以及周邊地區環境及附近的公共設施有較佳的了解。



AERIAL PHOTOGRAPH OF THE DEVELOPMENT  
發展項目的鳥瞰照片



This blank area falls outside the coverage of the aerial photograph  
鳥瞰照片並不覆蓋本空白範圍



Source of aerial photograph:  
Survey and Mapping Office  
of Lands Department, the  
Government of the Hong Kong  
Special Administrative Region.  
鳥瞰照片來源：香港特別行政區  
政府地政總署測繪處

Notes :

1. The above aerial photographs are taken at a flying height of 6,900 feet on 12 December, 2019 (Photo No. E085105C) and on 12 December, 2019 (Photo No. E085102C).
2. Survey and Mapping Office, Lands Department, The Government of HKSAR © Copyright reserved – reproduction by permission only.
3. Due to technical reasons (such as the shape of the Development), the aerial photographs have shown area more than that required under the Residential Properties (First-hand Sales) Ordinance.
4. The Vendor also advises purchasers to conduct on-site visit for a better understanding of the development site, its surrounding environment and the public facilities nearby.

E085105C



This blank area falls outside the coverage of the aerial photograph  
鳥瞰照片並不覆蓋本空白範圍

附註：

1. 上述鳥瞰照片於2019年12月12日(照片編號：E085105C)及2019年12月12日(照片編號：E085102C)6,900呎的飛行高度拍攝。
2. 香港特別行政區政府地政總署測繪處©版權所有，未經許可，不得複製。
3. 因技術原因(例如發展項目之形狀)，鳥瞰照片所顯示之範圍多於《一手住宅物業銷售條例》所要求顯示的範圍。
4. 賣方亦建議買方到該發展地盤作實地考察，以獲取對該發展地盤，以及周邊地區環境及附近的公共設施有較佳的了解。

E085102C

● Location of the Development  
發展項目的位置



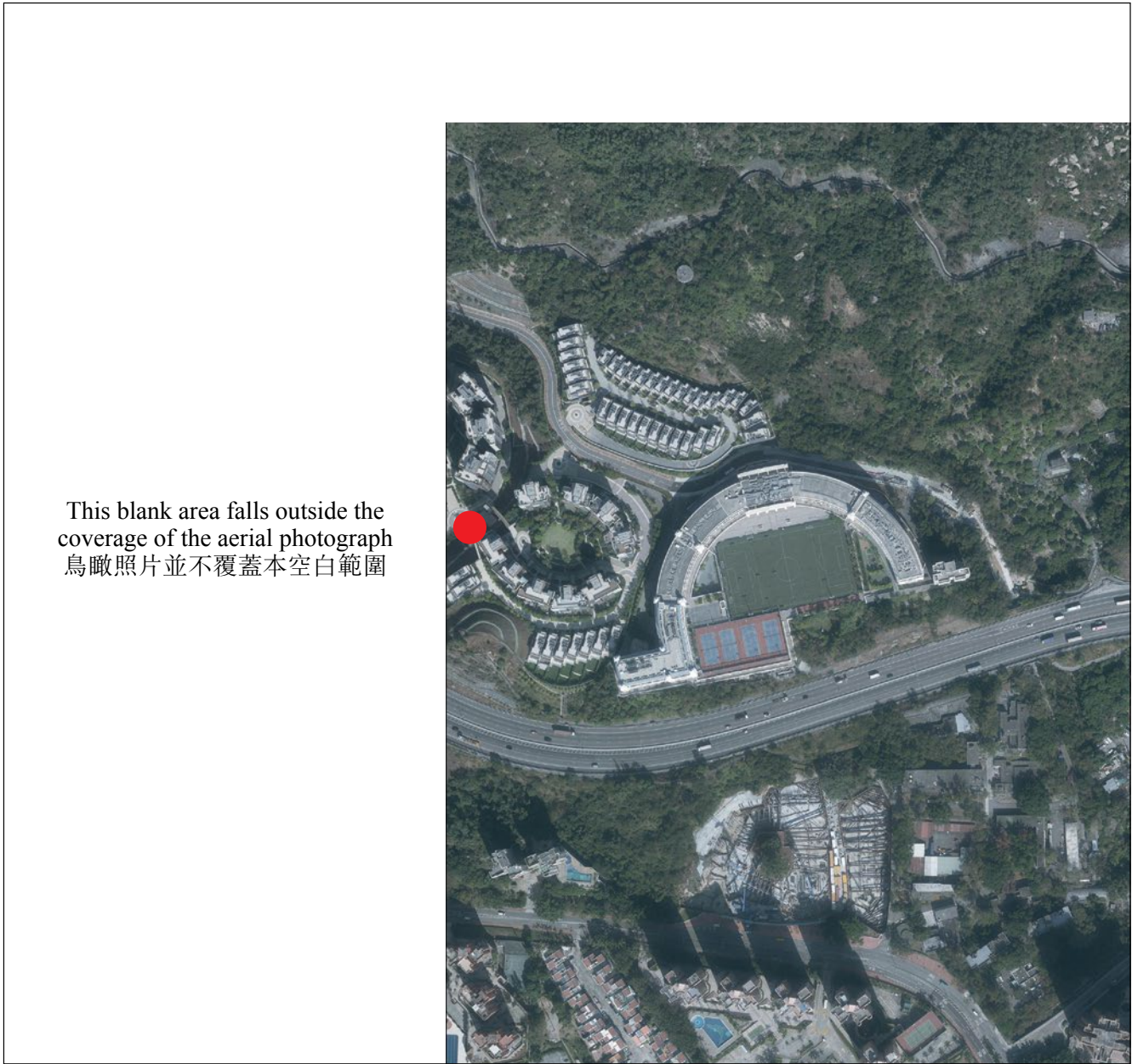
AERIAL PHOTOGRAPH OF THE DEVELOPMENT  
發展項目的鳥瞰照片



Source of aerial photograph:  
Survey and Mapping Office  
of Lands Department, the  
Government of the Hong Kong  
Special Administrative Region.  
鳥瞰照片來源：香港特別行政區  
政府地政總署測繪處

Notes :

1. The above aerial photographs are taken at a flying height of 6,900 feet on 12 December, 2019 (Photo No. E084806C) and on 12 December, 2019 (Photo No. E084809C).
2. Survey and Mapping Office, Lands Department, The Government of HKSAR © Copyright reserved – reproduction by permission only.
3. Due to technical reasons (such as the shape of the Development), the aerial photographs have shown area more than that required under the Residential Properties (First-hand Sales) Ordinance.
4. The Vendor also advises purchasers to conduct on-site visit for a better understanding of the development site, its surrounding environment and the public facilities nearby.



● Location of the Development  
發展項目的位置